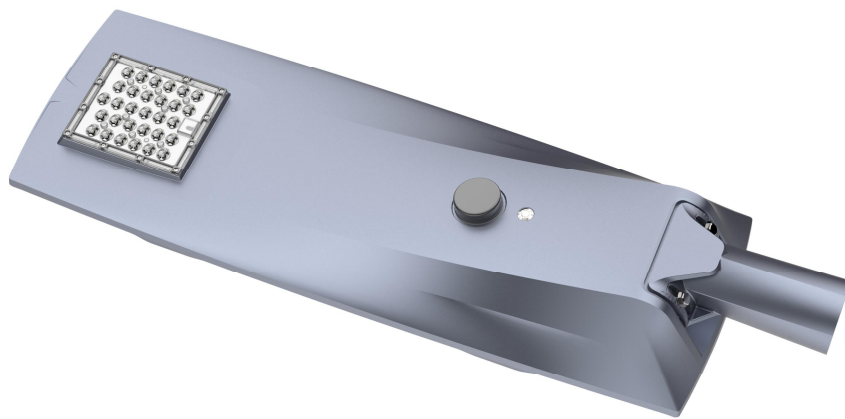


规格书 SPECIFICATION



产品名称

Product Name : Solar LED Street Light

产品型号

Part No: LY-ST30040XX / LY-ST30050XX (XX=PW、WW、NW)

批准号码

Approval No : 20210415004

V1.0

Add: 3/F, No.2 Bldg, Zhen Bao Industry Park, Bei Huan Rd, ShiYan Town

BaoAn District, ShenZhen, Guangdong, China

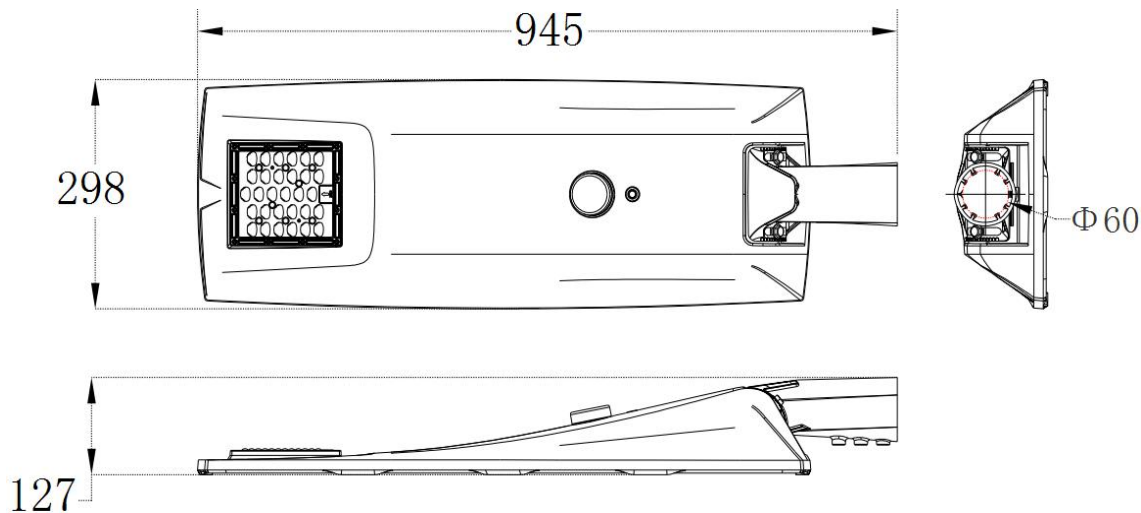
TEL:86-755-29816150/29816850

Email:info@leyond.com.cn

www.leyond.com.cn

感受光的魅力
EMBRACE THE CHARM OF LIGHT,
找寻光的价值
SEEK THE VALUE OF LIGHT!

1. Outlook



Unit: mm

2. Application

Suitable for the street lighting; sidewalk lighting; roadway lighting; fence lighting; pathway lighting; campus lighting; park lighting; garden lighting; ramp lighting; boat dock lighting; remote area lighting; farm & ranch lighting.

3. Features

1. The lamp adopts integrated structure design, with better heat dissipation design and longer life;
2. Using LUXEON 5050 lamp beads, the whole lighting effect is up to 180lm/W;
3. The solar panel is made of monocrystalline silicon, with a higher conversion efficiency, up to 18%, and a service life of up to 25 years;
4. Using the most advanced MPPT tracking control technology to improve system efficiency and reduce costs;
5. It has functions of light control, time control, dimming, intelligent power saving + morning light;
6. Solar controller built-in lightning protection module;
7. Using ternary lithium battery technology, the battery capacity is high;
8. 365 days uninterrupted power.
9. Three control model: **Time control + light sensor control + motion sensor control**

Time control: It can be divided into 5 time periods, which is more humane and energy-saving;

Light sensor control: When the evening comes, when the solar panel battery voltage is lower than 3V, the lamp will automatically turn on;

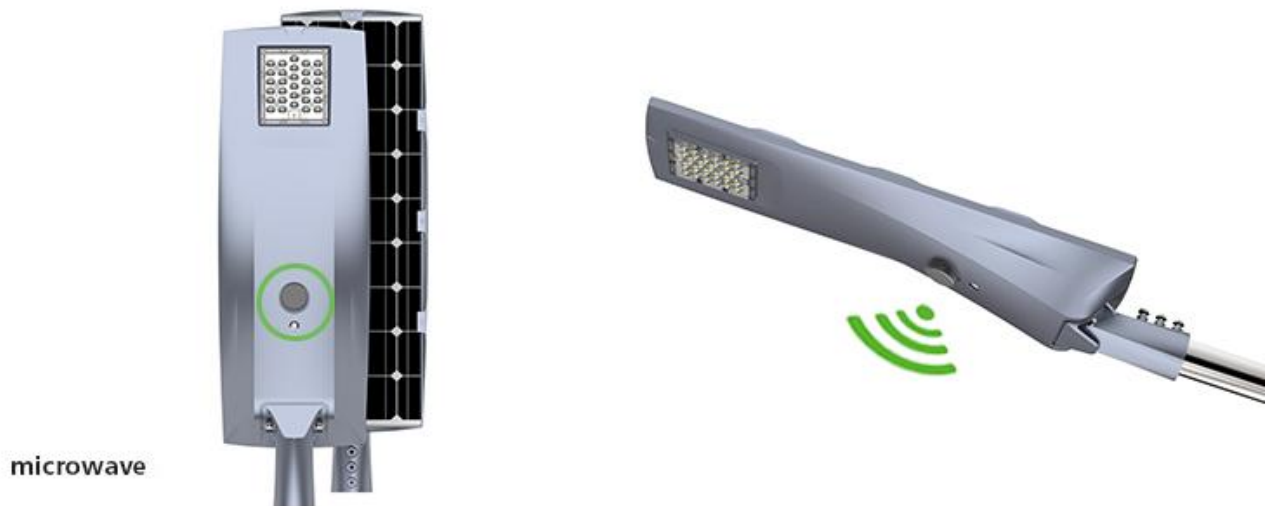
Motion sensor control: A motion-sensing energy-saving mode. When a moving object is sensed, the lamp will have 100% brightness; when no moving object is sensed, the lamp will be in a low-power and energy-saving state, with a brightness of 10%-100% (can be set)

感受光的魅力
EMBRACE THE CHARM OF LIGHT,
找寻光的价值
SEEK THE VALUE OF LIGHT!



THE INTELLIGENT CONTROL SYSTEM

Intelligent controller works with Microwave sensor,ensure the effective lighting.



INTELLIGENT CONTROL SYSTEM

THE intelligent control system can operate without interruption,ensure the effective lighting.



Day



Without human body
induction at night



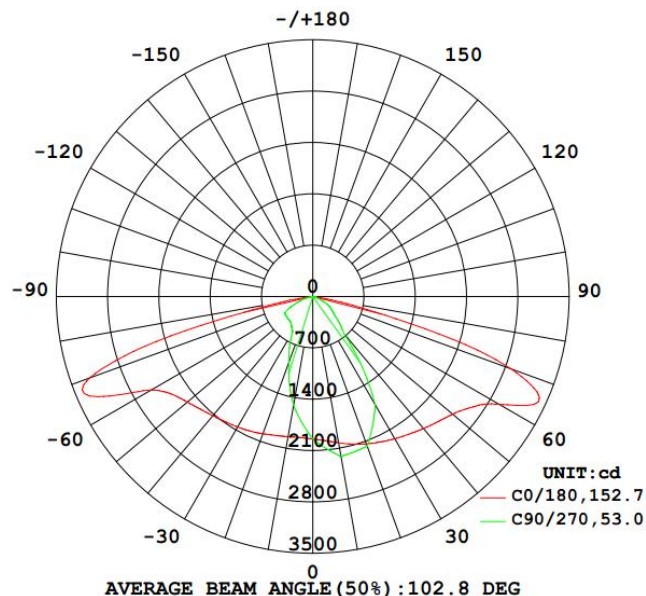
With human body
induction at night

感受光的魅力
EMBRACE THE CHARM OF LIGHT,
找寻光的价值
SEEK THE VALUE OF LIGHT!

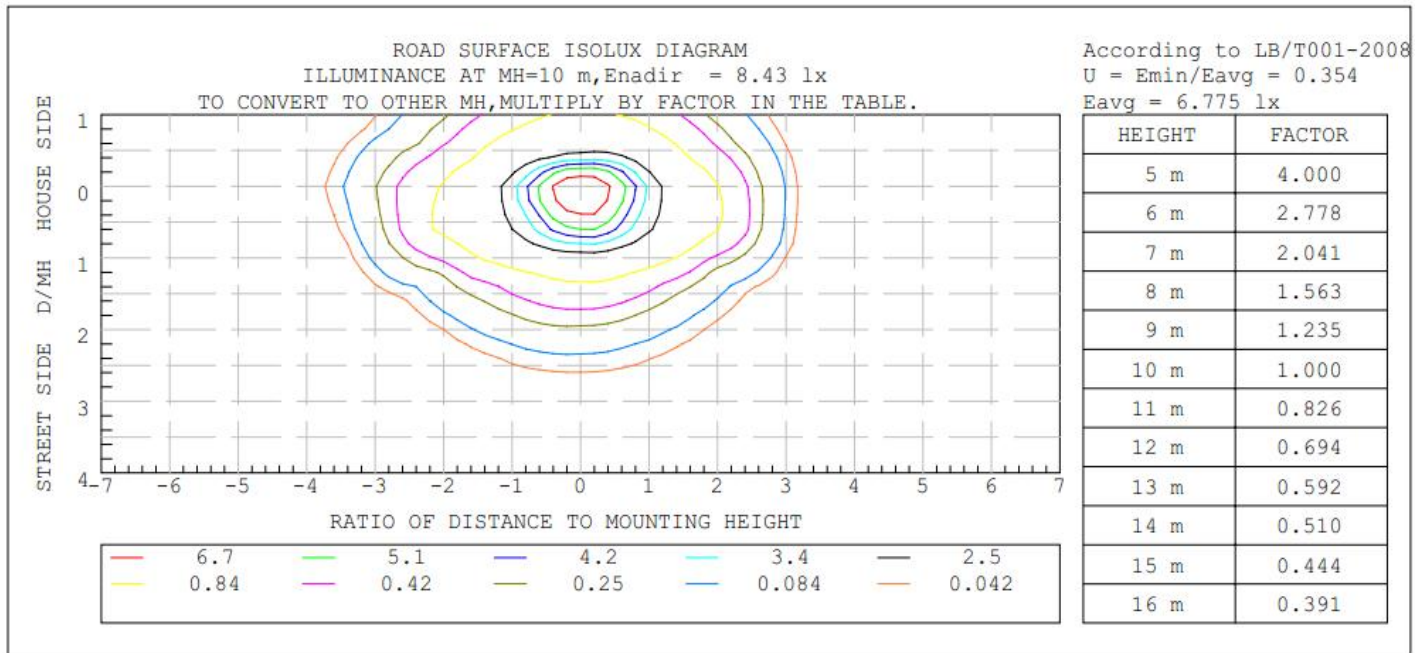
4. Specification

Part NO Parameter	LY-ST30040XX XX=PW/WW/NW		LY- ST30050XX XX=PW/WW/NW	
Battery	18650 LiFePO4 12.8V 36Ah		18650 LiFePO4 12.8V 40Ah	
Beam angle	150x70°			
Pole diameter	60MM			
Light output	40W		50W	
Luminous flux(lm)	7200		9000	
Color Temperature	Pure white:5000-6500K	Warm white:2700-3200K	Neutral white:4000-4500K	
Solar panel	50W /18V monocrystalline silicon (Life span of 25 years, 80% efficiency)			
CRI	70/80/90			
Chip Brand	LUXEON 5050			
LED Quantity(PCS)	30			
Control Mode	Time control + Light sensor control + Motion sensor control			
Operating time	>12 hours ,Intelligent mode 3-4 days (Affected by local use environment and sunlight)			
Material	Die Casting Aluminum			
Luminous efficiency(lm/w)	> 180		>180	
Lifespan(hrs)	>50000			
IP Rating	IP65			
Installation height	4~6M			
Size(mm)	L945*W298*H127		(L37.21*W11.73*H5.0 Inch)	
Net Weigh(kg)	10		12	
Package Size(mm)	L1000*W340*H185		(L39.37*W13.39*H7.28 Inch)	
Package Quantity(Pcs)	1			
Gross Weigh(kg)	11.1		13.1	

5. Distribution Curve



感受光的魅力
EMBRACE THE CHARM OF LIGHT,
找寻光的价值
SEEK THE VALUE OF LIGHT!



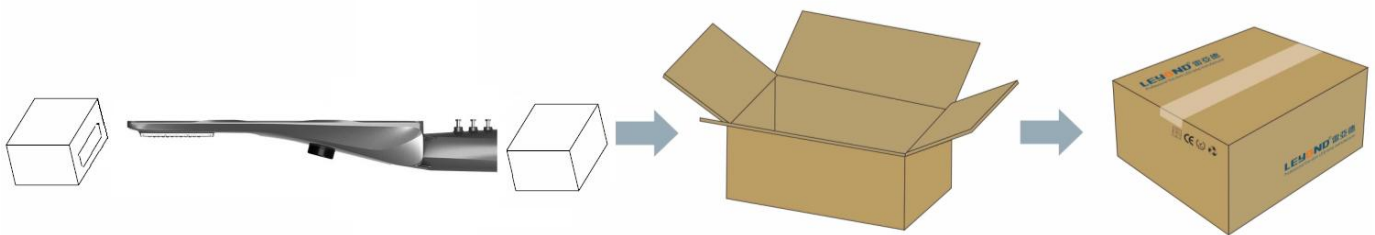
6. Operation and Storage Condition

- Operation Ambient Temperature -10 to +45°C, Relative Humidity 20~90%
- Storage Ambient Temperature -10 to +35°C, Relative Humidity 5~95%
- Mounting Height: Suitable for 4~6m height

7. Package

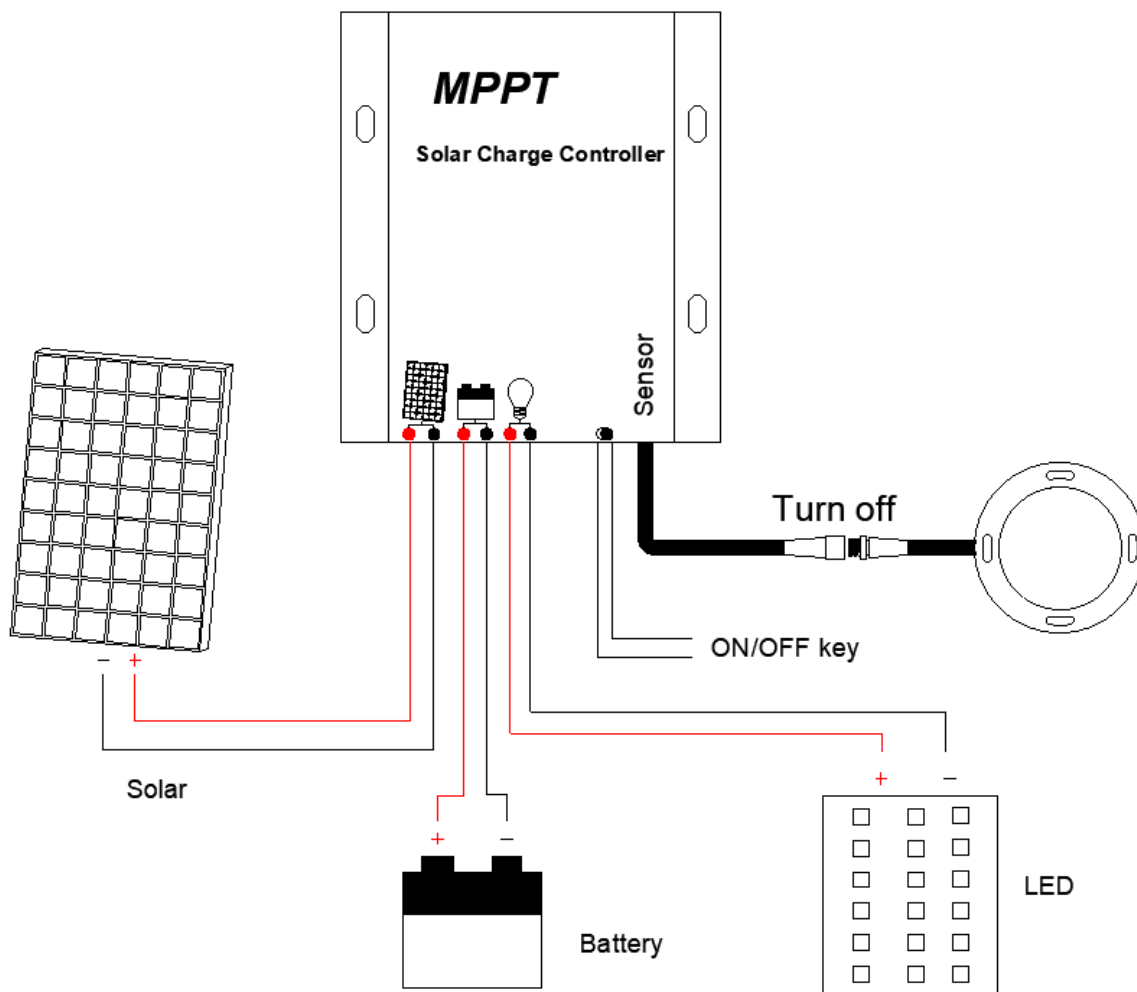
Inner box Size: 1000mm×340mm×185mm (1 PCS LED Street Light)

Outer box Size: 1020mm×355mm×405mm (2 PCS LED Street Light)



感受光的魅力
EMBRACE THE CHARM OF LIGHT,
找寻光的价值
SEEK THE VALUE OF LIGHT!

8. Lamp internal wiring diagram:



9. Warning

1. Do not install in high temperature, closed and non-ventilated areas;
2. The installation location should not be installed under the tree or the place where there are obstructions. The solar panel must be exposed to sunlight in all directions;
3. When the product is stored in the warehouse, it needs to be charged and discharged every 3 months;
4. When the product is faulty, you need to find a professional to deal with it;
5. Eliminate scrapped products, must be handed over to the relevant departments for Centralized processing.